

Photometric Report

MAR-90356997 Exterior Linear 310 QUAD Cove – Max

MARTIN PROFESSIONAL R&D OPTICAL LABORATORY

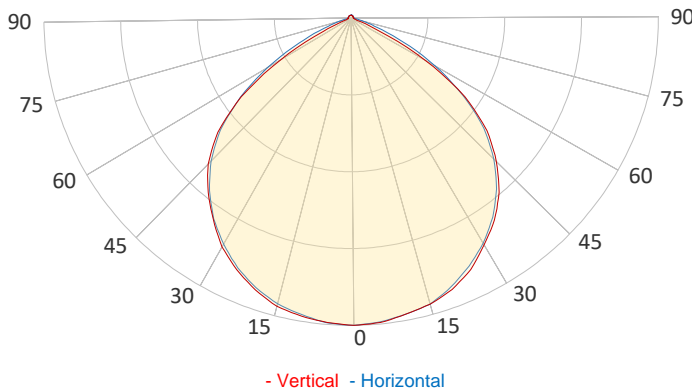
GENERAL SPECIFICATIONS

Total Fixture Output:	793 lm
Light Engine Output:	1067 lm
Efficacy:	38 lm/W
Lens Option:	Cove
Beam Angle (50%):	105°
Field Angle (10%):	134°
Cut-off Angle (3%):	147°
CRI:	73+
CQS:	87+
TM-30 Rf:	83+
TM-30 Rg:	105+
TLCI:	75+
Color Temperature:	Variable



SAMPLE MEASUREMENT

POLAR PLOT

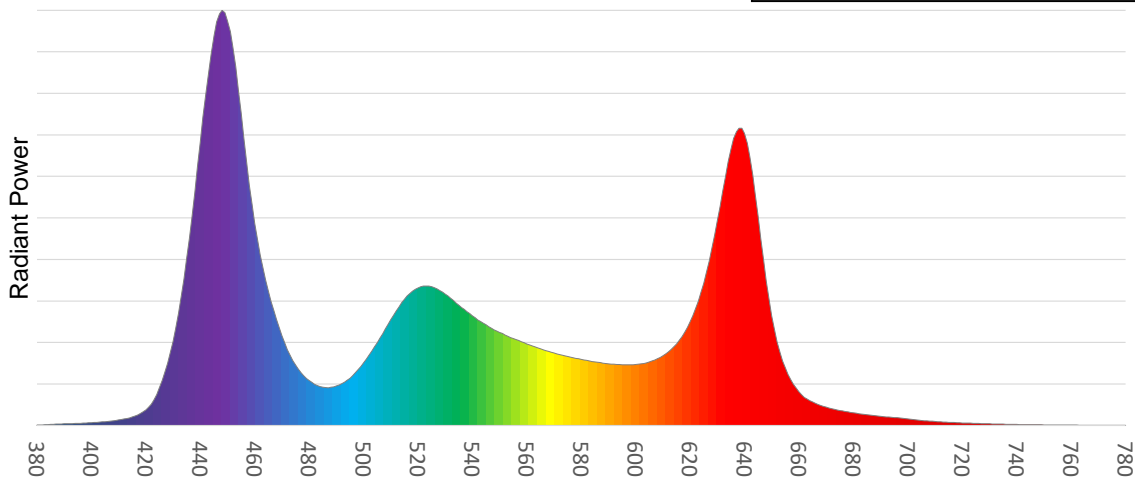


Catalog Number:	MAR-90356997
Measured Output:	793 lm
Measured Peak:	327 cd
Consumed Power:	19.1 W
Efficacy:	42.4 lm/W

Beam Angle (50%):	105.3°
Field Angle (10%):	135.6°
Cut-off Angle (3%):	147.7°

Measurement Condition:	
Ambient Temperature:	25° +/- 5° C
AC Supply:	230V/50Hz
Fan Mode:	No Fan
Fixture Warm-up Time:	30 minutes

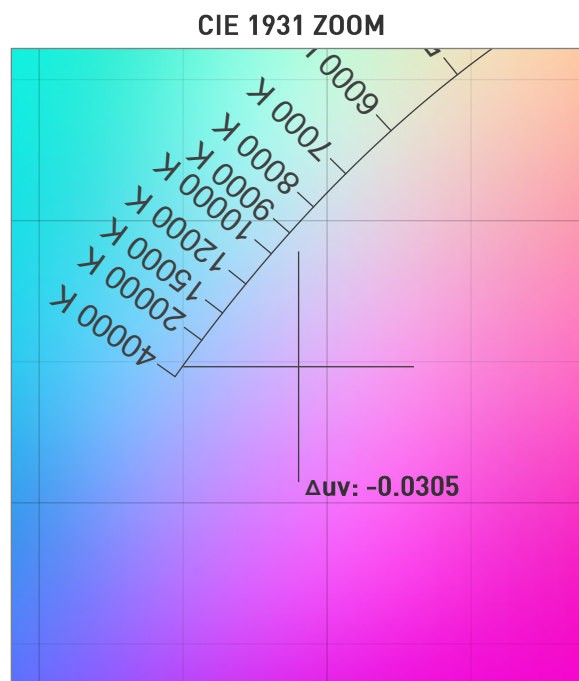
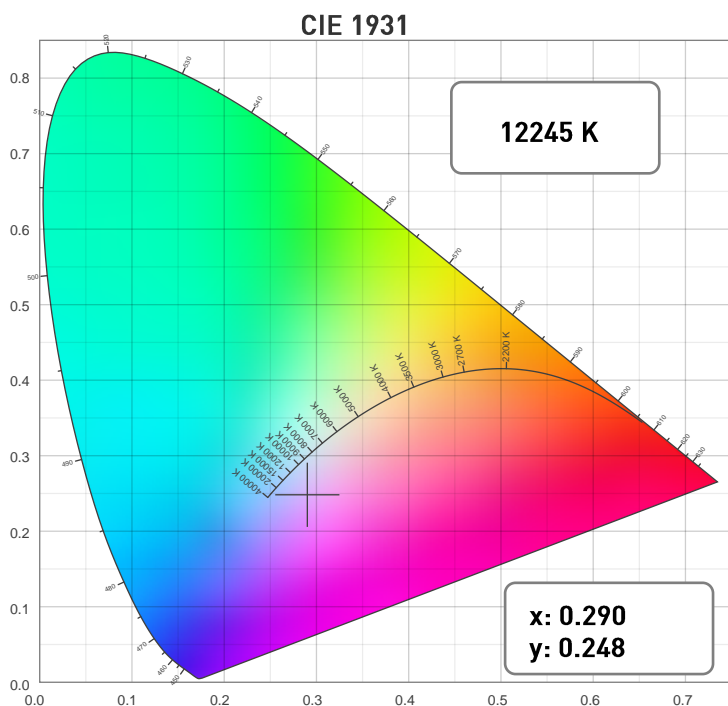
SPECTRAL DISTRIBUTION



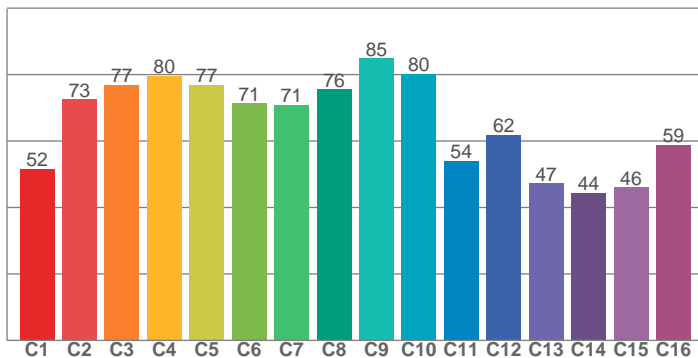
Photometric Report

MAR-90356997 Exterior Linear 310 QUAD Cove – Max

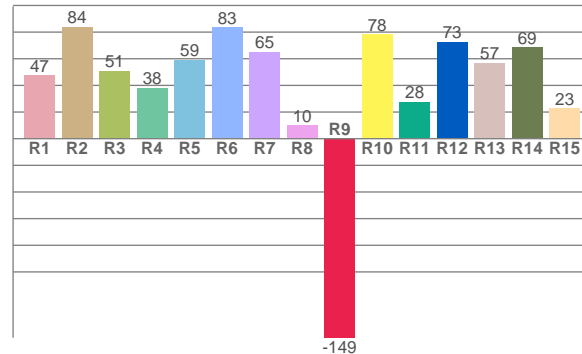
CHROMATICITY



TM30: 68.6



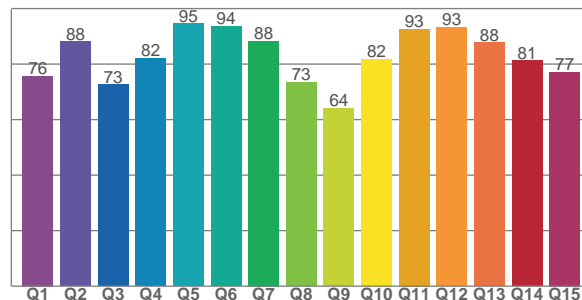
CRI: 54.8 (R1-R8)



COLOR PARAMETERS

Color Temperature	Color Rendering Index	Red Component	Color Fidelity	Color Gamut
CCT	CRI	CRI R9	TM30 Rf	TM30 Rg
12245 K	54.8	-149.4	68.6	123.6

CQS: 80.9



Television Lighting Consistency Index	Color Quality Scale	Color Coordinate CIE 1931	Color Coordinate CIE 1931	Color Coordinate CIE 1964	Color Coordinate CIE 1964	Color Deviation from Black Body
TLCI	CQS	x	y	u	v	Δuv
75+	80.9	0.290	0.248	0.215	0.276	-0.0305

Photometric Report

MAR-90356997 Exterior Linear 310 QUAD Cove – Max

TM30

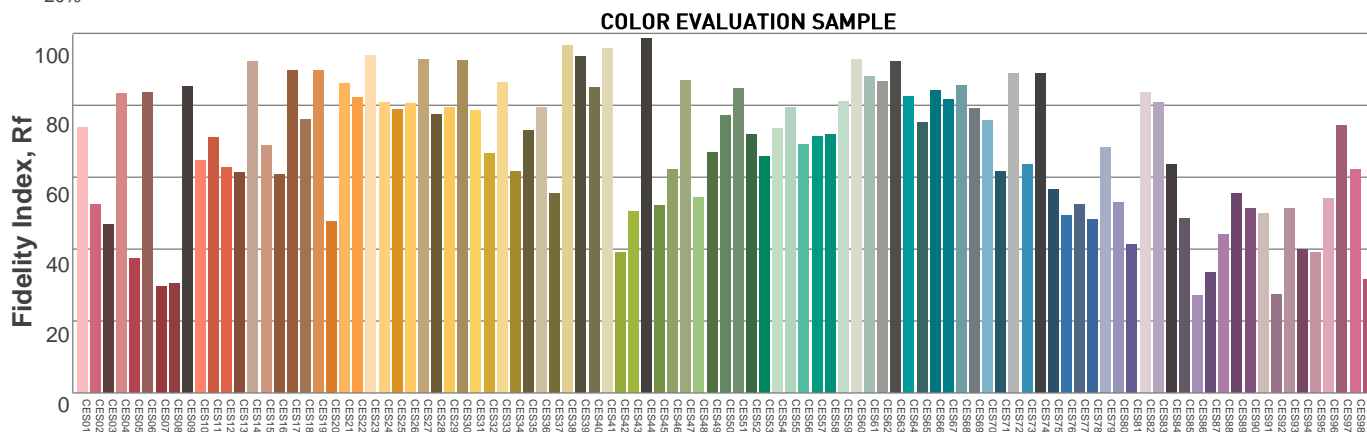
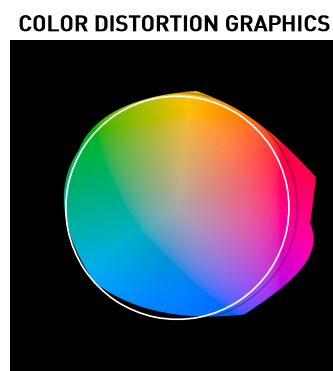
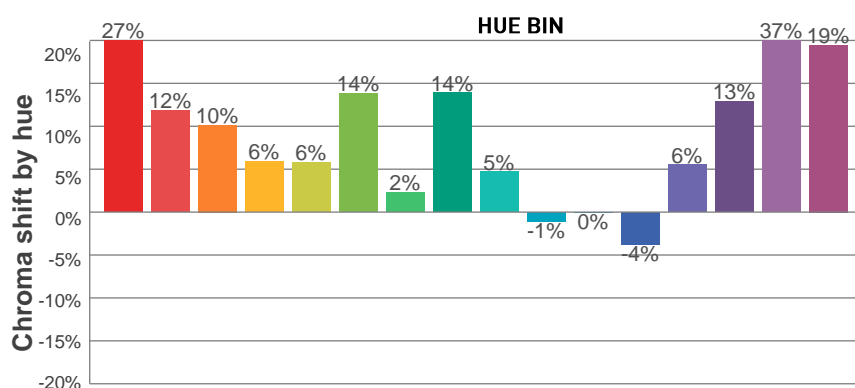
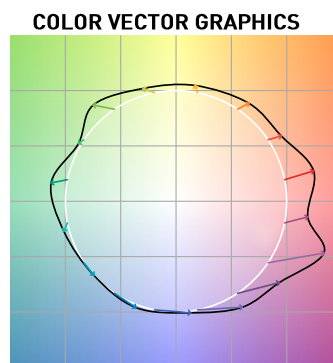
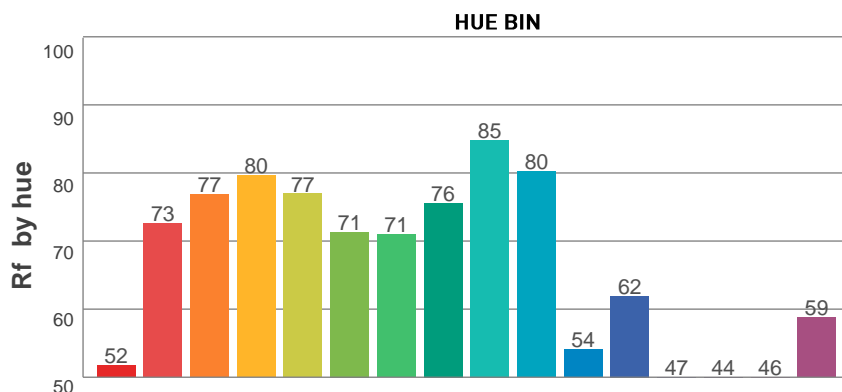
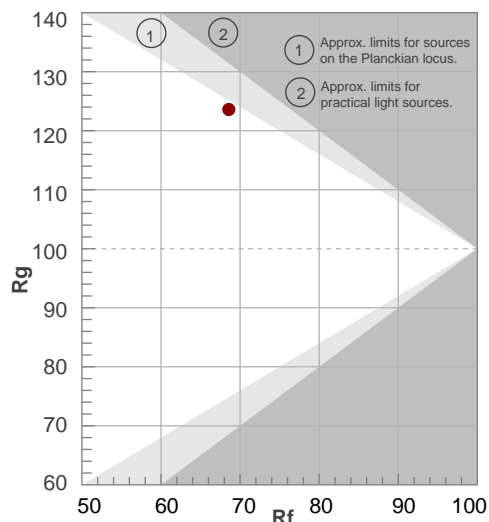
Rf 68.6

Fidelity index Rf

Rg 123.6

Gamut index Rg

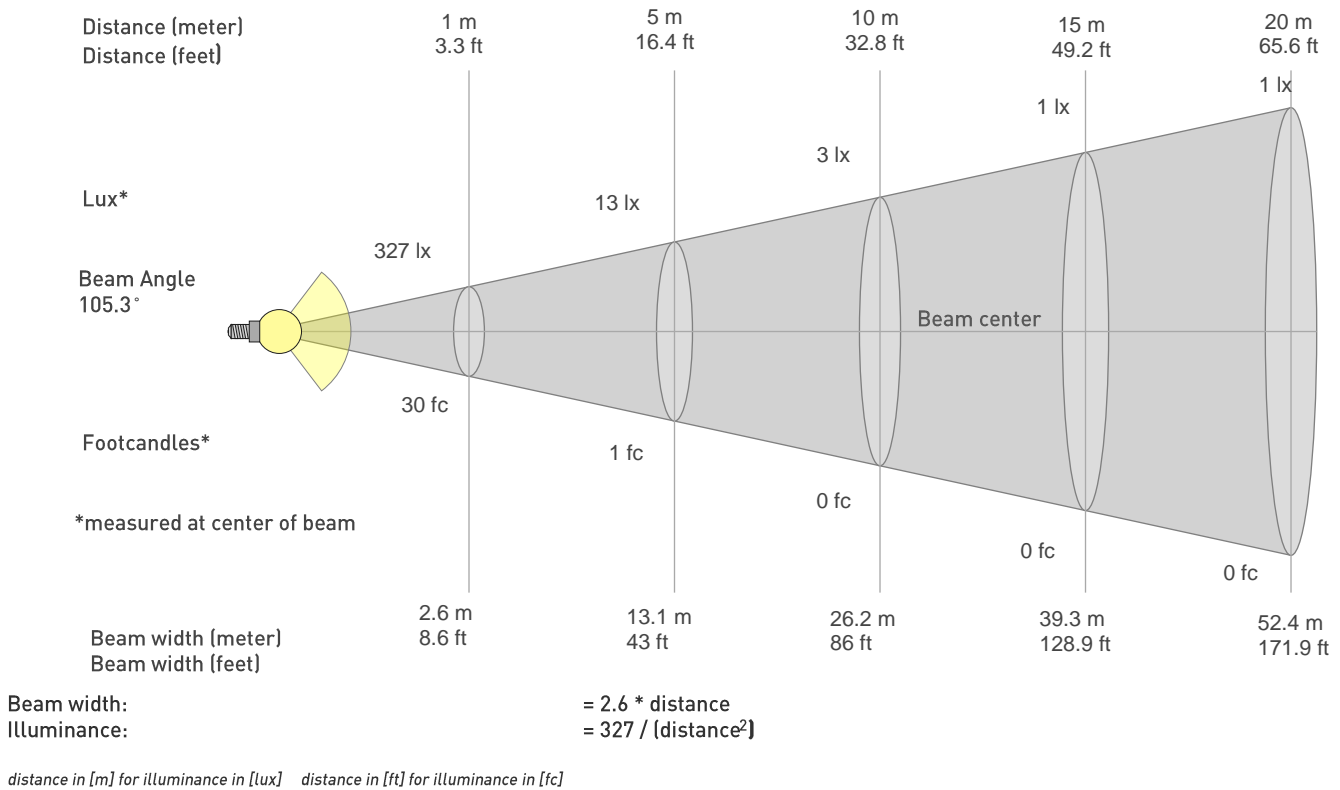
Hue Bin	R _f	Graphic shifts (%)	
		Chroma	Hue
1	52	27%	3%
2	73	12%	-4%
3	77	10%	-5%
4	80	6%	4%
5	77	6%	9%
6	71	14%	14%
7	71	2%	6%
8	76	14%	6%
9	85	5%	7%
10	80	-1%	14%
11	54	0%	23%
12	62	-4%	33%
13	47	6%	40%
14	44	13%	37%
15	46	37%	35%
16	59	19%	9%



Photometric Report

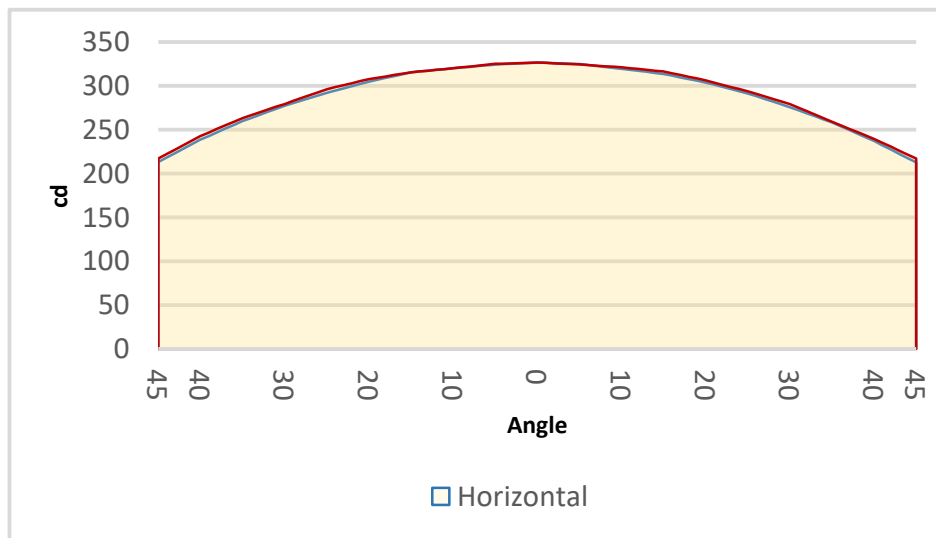
MAR-90356997 Exterior Linear 310 QUAD Cove – Max

BEAM DETAILS



BEAM ILLUMINANCE FROM 1-20M

1m	2m	3m	4m	5m	6m	7m	8m	9m	10m	11m	12m	13m	14m	15m	16m	17m	18m	19m	20m
3.3ft	6.6ft	9.8ft	13.1ft	16.4ft	19.7ft	23ft	26.2ft	29.5ft	32.8ft	36.1ft	39.4ft	42.7ft	45.9ft	49.2ft	52.5ft	55.8ft	59.1ft	62.3ft	65.6ft
327lx	82lx	36lx	20lx	13lx	9lx	7lx	5lx	4lx	3lx	3lx	2lx	2lx	2lx	1lx	1lx	1lx	1lx	1lx	1lx
30.3fc	7.6fc	3.4fc	1.9fc	1.2fc	0.8fc	0.6fc	0.5fc	0.4fc	0.3fc	0.3fc	0.2fc	0.2fc	0.2fc	0.1fc	0.1fc	0.1fc	0.1fc	0.1fc	0.1fc



BEAM ANGLE 50%	FIELD ANGLE 10%	CUTOFF ANGLE 3%
105.3°	135.6°	147.7°